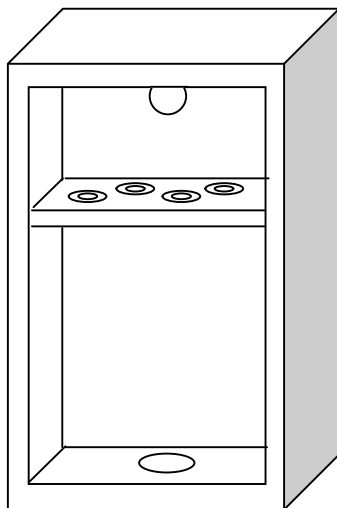
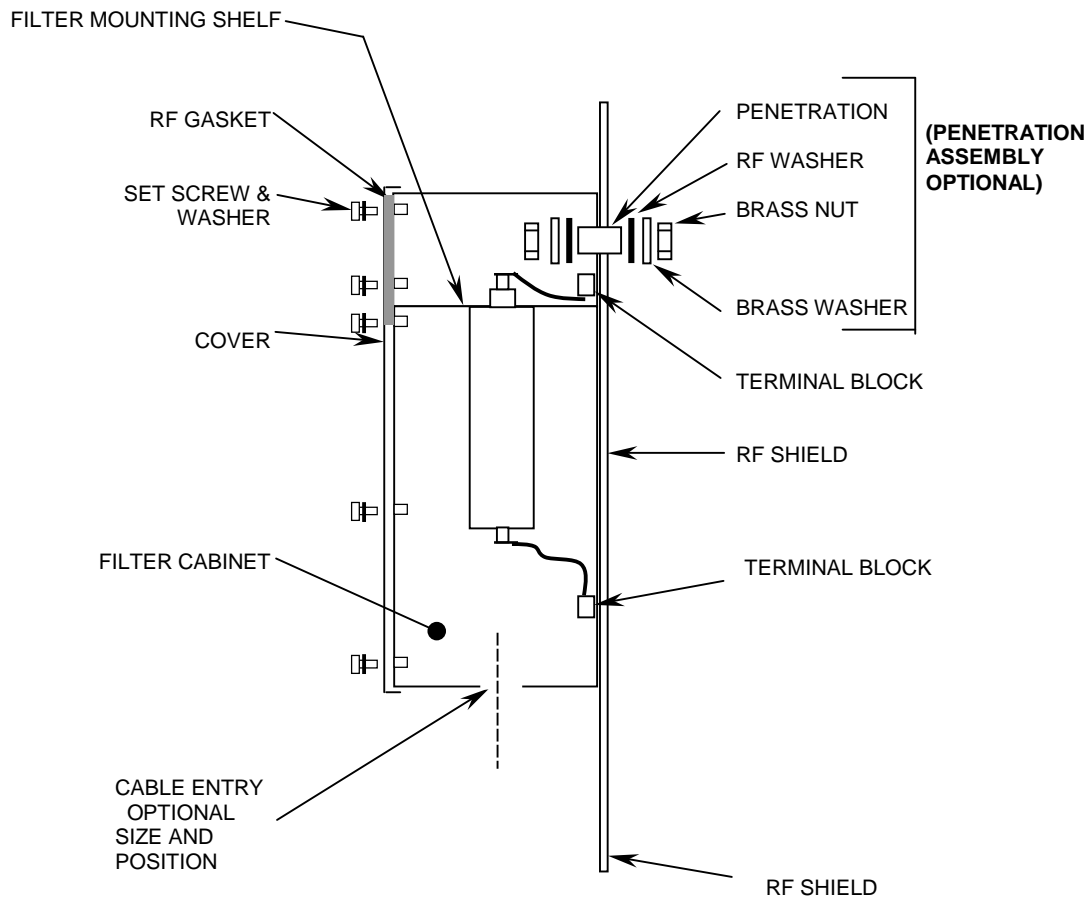




Typical Filter Cabinet



Cabinet Dimensions with the lid fitted are governed by the quantity and types of filters fitted.

filtercabinet rev3 0201.doc

RFI Industries Pty Limited

EMC ENGINEERS & LABORATORIES

52 – 54 Holloway Drive
Bayswater Victoria 3153
AUSTRALIA

P.O. Box 254
Bayswater Victoria 3153
AUSTRALIA

t +61 (0)3 8739 6700
f +61 (0)3 8739 6799

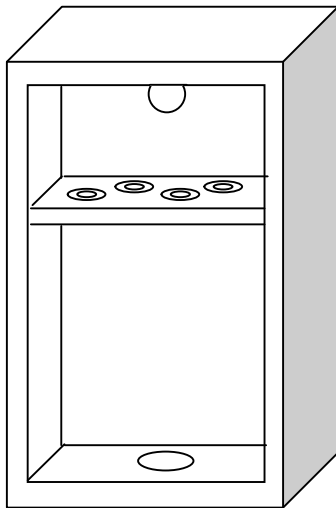
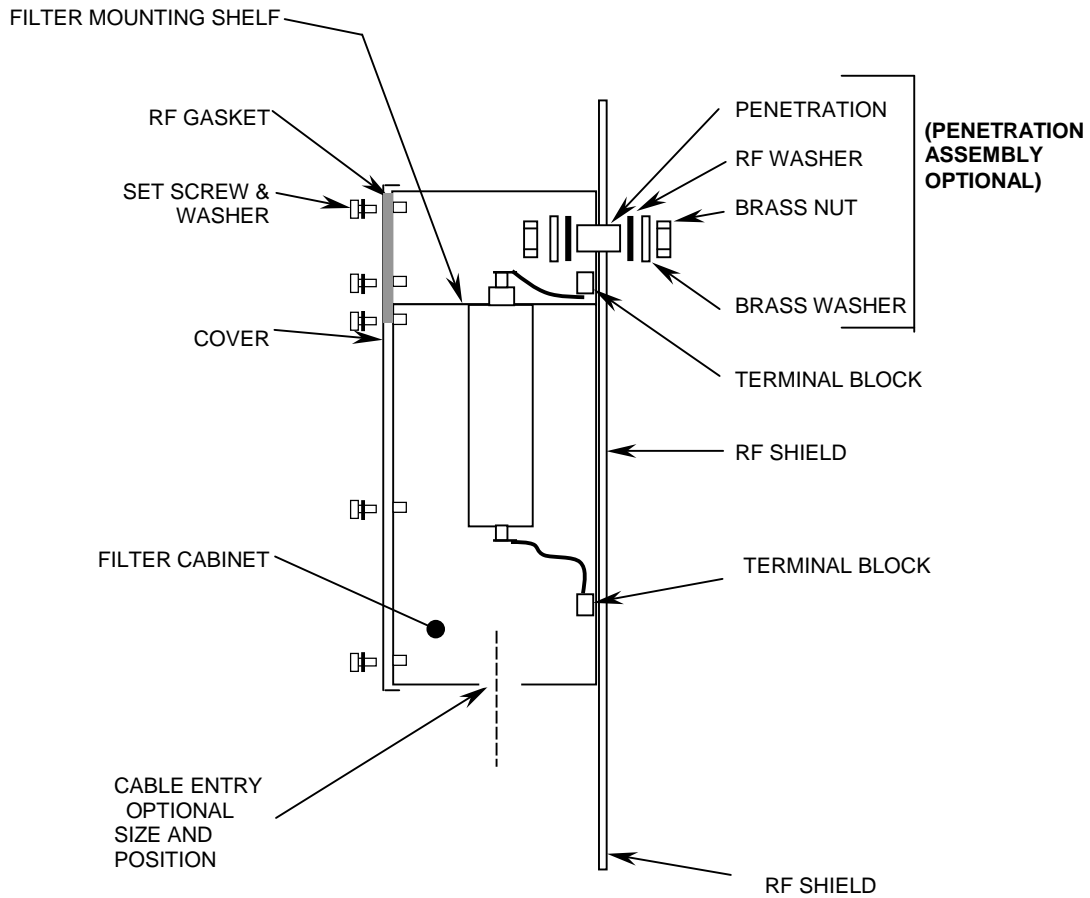
e sales@rfi-ind.com.au
e emclabs@rfi-ind.com.au

ABN 66 005 273 950

EMC TESTING
EMC COMPONENTS
MAGNETIC SHIELDING
EMC INSTRUMENTATION
RF ANECHOIC CHAMBERS
RF/EM SHIELDED ENCLOSURES



Typical Filter Cabinet



Cabinet Dimensions with the lid fitted are governed by the quantity and types of filters fitted.

filtercabinet rev3 0201.doc

RFI Industries Pty Limited

EMC ENGINEERS & LABORATORIES

52 – 54 Holloway Drive
Bayswater Victoria 3153
AUSTRALIA

P.O. Box 254
Bayswater Victoria 3153
AUSTRALIA

t +61 (0)3 8739 6700
f +61 (0)3 8739 6799

e sales@rfi-ind.com.au
e emclabs@rfi-ind.com.au

ABN 66 005 273 950

EMC TESTING
EMC COMPONENTS
MAGNETIC SHIELDING
EMC INSTRUMENTATION
RF ANECHOIC CHAMBERS
RF/EM SHIELDED ENCLOSURES